



PRE-MADE  
**GAS FIRE PITS**

---

OUTDOOR LIVING





# Fire Bowls

## Riverside Fire Bowl



Dimensions: 36.35" L x 36.35" W x 13" H  
 Rated: 50,000 BTUs  
 Includes: Leveling feet, burner lid, lava rock filler, tank seat, hose and regulator, vinyl storage cover, LP Tank and Natural Gas conversion kit.  
*Made of reinforced concrete and heavy gauge steel.*

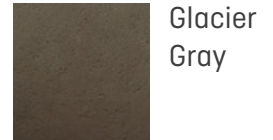
FPRIVRFBXX

## Riverside Oval Fire Bowl

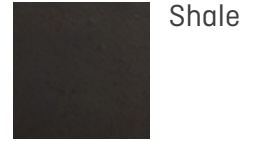


Dimensions: 48.25" L x 28.25" W x 15.25" H  
 Rated: 50,000 BTUs  
 Includes: Leveling feet, burner lid, lava rock filler, tank seat, hose and regulator, vinyl storage cover, LP Tank and Natural Gas conversion kit.  
*Made of reinforced concrete and heavy gauge steel.*

FPRIVOFBXX



Glacier Gray



Shale



Order a tank cover to match!

**Riverside Tank Cover**

FPRIVTKLPX

## Rotondo Fire 48" Bowl

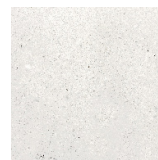


Dimensions: 48" L x 48" W x 18" H  
 Rated: 65,000 BTUs  
 Includes: Lava Rock, Key Valve Ignition, and is compatible with Propane Gas or Natural Gas.  
 Has 11" deep surface.  
*Made of glass fiber reinforced concrete.*

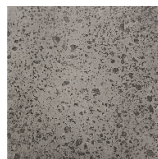
PROT-XXXX



Natural



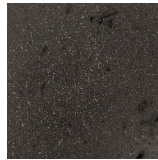
Ultra



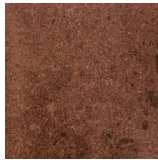
Pewter



Coastal



Ebony

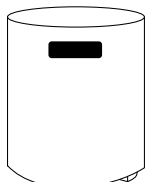
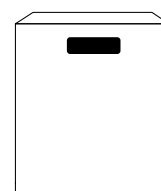
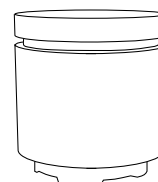
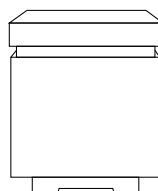


Cafe



6 Fabulous Colors

4 Stylish Designs



# Custom Gas Fire Pits

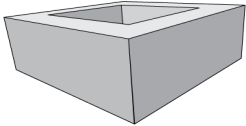
Our modular templates allow you to completely customize your gas fire pit in 3 easy steps.

## 1. Choose Your Shape



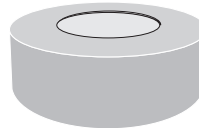
### THE CLASSICS

#### SQUARE



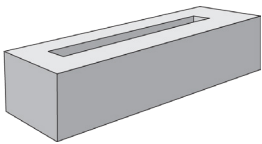
- Modular Square Gas Fire Pit
- Standard Size: 36" x 40"
- Includes Engineered Modular, Ring + Fire Pan
- 24 SF stone veneer needed

#### ROUND



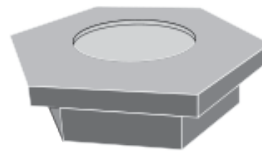
- Modular Round Gas Fire Pit
- Standard Size: 48" x 16"
- Includes Engineered Modular, Ring + Fire Pan
- 36 SF stone veneer needed

#### RECTANGLE



- Modular Rectangular Gas Fire Pit
- Best Seller: 60" x 24" x 18"
- Includes Engineered Modular, Ring + Fire Pan
- 21 SF stone veneer needed

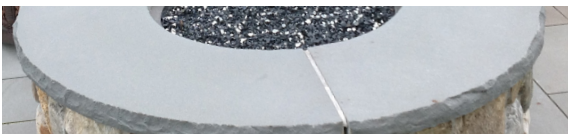
#### HEX



- Modular Hex Gas Fire Pit
- Best Seller: 48" x 18h"
- Includes Engineered Modular, Ring + Fire Pan
- 20 SF stone veneer needed

## 2. Choose Your Stone

### COPING



#### BLUESTONE



#### CHATHAM BLUE GRANITE

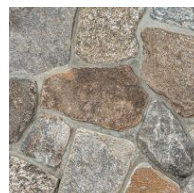


#### BROWNSTONE

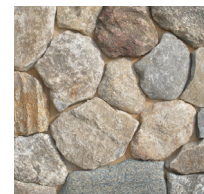
### VENEER



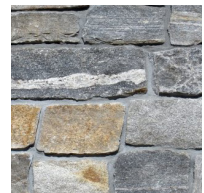
#### FIELDSTONE SQUARE + REC



#### NEW ENGLAND MOSAIC



#### WEATHERED FIELDSTONE ROUNDS



#### FIELDSTONE ASHLAR



# Accessories for Your Custom Fire Pit or Pre-Fab Fire Pit!

## 3. Finishing Touches/Accessories

We offer all durable high quality components from push button or remote start to galvanized spark screens. Choose from the biggest selection of glass to match your outdoor living space and surrounding stone designs.

### BURNER + PANS

Best Sellers  
25", 31", 37", and 43"



### STARTER

Conveniently power on your gas fire pit with a match-lit starter, fire pit push-start, or remote starter!

*Disclaimer: Not available for all fire pits.*



### GLASS WIND GUARDS



Designed for style and safety, these glass wind guards are the perfect accessory to your gas fire pit. Made of durable tempered glass to reduce flame disturbance.

*Disclaimer: Not available for all fire pits.*

### TANK COVERS

Hide an unsightly tank for your fire pit under a matching tank cover. It doubles as a small table!



### SPARK SCREENS

Stay worry-free around your Gas Fire Pit with our spark/ safety screen!

*Disclaimer: Not rust resistant*



### FIRE GLASS *Gas Firepits usually require a minimum of 40lbs of Fire Glass (4 Containers)*



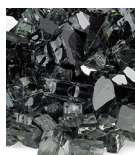
Clear



Starfire



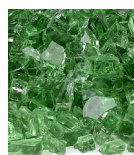
Bronze



Black



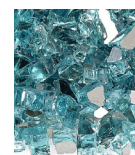
Copper



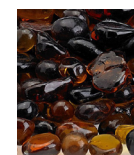
Evergreen



Cobalt



Azuria



Amber



Lava Stones



NOT FEELING  
GASSY?  
CHECK OUT OUR  
WOOD BURNING  
FIRE PIT KITS!



# Fire Tables

## Coden Rectangle



Dimensions: 58"L x 28"W x 20"H

Rated: 65,000 BTUs

Includes: Burner, black lava rock, 8' LP hose with regulator, leveling feet, protective cover and burner lid.  
Optional: Natural gas conversion kit available.

*Made of ultra-durable, powder coated lightweight aluminum,*

**FPCODREXX**



## Coden Rectangle



Dimensions: 42"L x 42"W x 20"H

Rated: 40,000 BTUs

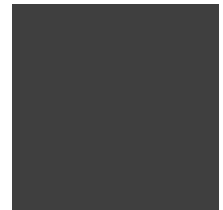
Includes: Burner, black lava rock, 8' LP hose with regulator, leveling feet, protective cover and burner lid.  
Optional: Natural gas conversion kit available.

*Made of ultra-durable, powder coated lightweight aluminum,*

**Dropship Only**



Textured  
Carbon



Textured  
Graphite

The Coden fire pit offers a sleek, modern look with the added bonus of an internal tank enclosure. No need to buy a tank cover when it's already hidden!

All the Coden fire pits are also made in the USA!

**Don't forget to pick up fireglass or lava rocks to fill your burner pan!**



# Fire Tables

## Aegean Large Rectangle



Dimensions: 50"L x 32" W x 15.25"H  
Rated: 50,000 BTUs  
Includes: Leveling feet, burner lid, lava rock filler, tank seat, hose and regulator, vinyl storage cover, LP Tank and Natural Gas conversion kit. *Made of powder coated steel.*

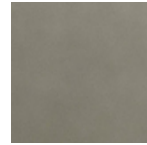
Dropship Only

## Aegean Square

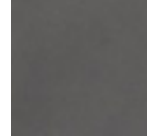


Dimensions: 36"L x 36" W x 15.25"H  
Rated: 50,000 BTUs  
Includes: Leveling feet, burner lid, lava rock filler, tank seat, hose and regulator, vinyl storage cover, LP Tank and Natural Gas conversion kit. *Made of powder coated steel.*

FPAEGSQX



Mist  
Gray



Weathered  
Slate



Order a tank cover  
to match!

**Aegean Tank  
Cover**

FPAEGTCLPX

## Estes High Square



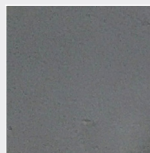
Dimensions: 40"Lx40"Wx19"H  
Rated: 60,000 BTUs  
Includes: protective vinyl cover, lava rock filler, and 17" LP hose with regulator and 11 lb (empty) propane tank or natural gas kit. *Handmade in the USA of durable GFRC.*

FPESTSQLPX

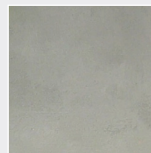
Create the ideal outdoor gathering space with the stylish and versatile design of the Estes Fire Table.

These fire tables have a simplified silhouette and a weathered, rustic finish with a brass burner system that produces rich and inviting flames throughout the seasons.

### Available in 2 Finishes!



Carbon



Flint

MADE IN THE USA

## Estes Rectangle



Dimensions: 60"Lx30"Wx19"H  
Rated: 60,000 BTUs  
Includes: protective fabric cover, lava rock filler, and 17" LP hose with regulator and 11 lb (empty) propane tank or natural gas kit. *Handmade in the USA of durable GFRC.*

FPESTLRLPX