



ANTIQUE HEART PINE
Reclaimed Flooring
Martha Mills Collection

Martha Mills Collection

Why Reclaimed?

Reclaimed Wood has a strength and beauty not found in newly sawn lumber. Salvaged from old buildings, this wood is originally from American forests and is a part of history dating back centuries. Not only is it environmentally responsible and green, reclaimed wood looks amazing, and is a beautiful addition to any home.

How Stonewood Products Reclaims

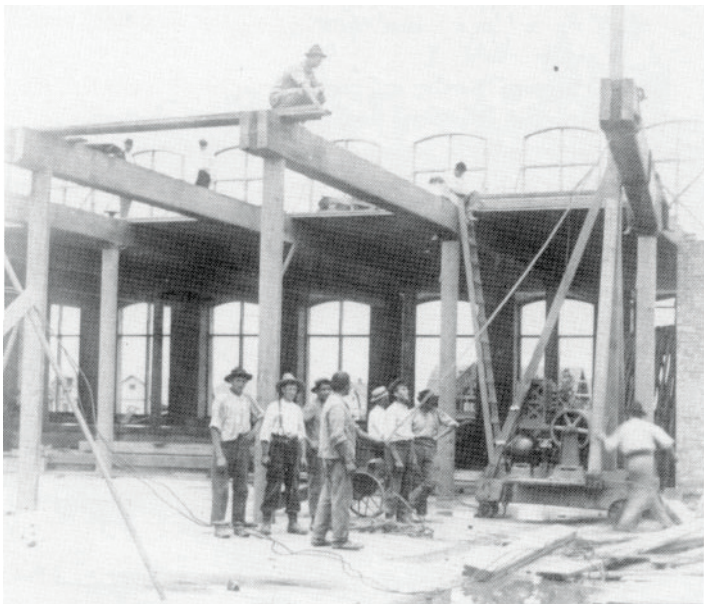
We harvest wood from old buildings such as mills, barns, and factories. The next step in the process is to have it milled down and repurposed into flooring, lumber, and other applications. Using different parts of a building gives us the capability to provide many reclaimed products for various designs and building projects.

Stonewood Products is involved in the reclaiming process from start to finish, which allows us the ability to offer excellent prices with endless possibilities.

Martha Mills Collection

The Martha Mills Collection is one of our best selling reclaimed floors due to its rich color, beautiful grain, price, and availability. Our Antique Heart Pine is offered in three grades:
Naily - with various knots and large nail holes
Select - with fewer knots and nail holes
Prime - for a cleaner look with virtually no knots





*Workers on the construction site
1905*

ANTIQUE HEART PINE

Reclaimed Flooring

Martha Mills Collection

Our first reclamation project in this series produced one of our best selling reclaimed floors, which is installed in many homes across America. In the mill town of Thomaston, Georgia, Martha Mills produced many textiles including tire cord and yarn. At the time of its construction, Martha Mills was one of the largest plants in the world.

Inspired by this project we bring you the Martha Mills Collection... floors harvested from old American Mills across the country.



"Illustrate the description—It describes you!"



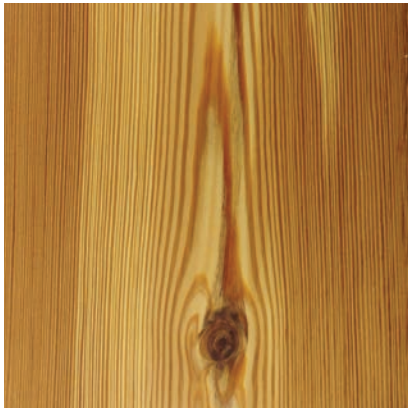
Naily



Naily offers a rustic charm for those that love the look of a naily floor - an unmistakable characteristic of reclamation.



Select



Select is our best seller lending some knots and variation for a beautiful floor.



Prime _____



Choose Prime if you prefer the look of a clearer, tight grained Antique Heart Pine floor.



Martha Mills Floor Specifications

Naily

Thickness: 3/4" Solid
Widths: Varying 4"-10"
Lengths: up to 10'
Finish: Unfinished or Prefinished

Select

Thickness: 3/4" Solid
Widths: Varying 4"-10"
Lengths: up to 10'
Finish: Unfinished or Prefinished

Prime

Thickness: 3/4" Solid
Widths: Varying 5"-10"
Lengths: up to 10'
Finish: Unfinished or Prefinished

Looking for engineered? Ask us about options.



Naily

Tobacco Series

Harvested from old growth beams, our Tobacco Series Collection offers gorgeous reclaimed pine floors that can be milled as wide boards and long lengths. If you are looking for a custom floor that makes a statement, start with our Tobacco Series.



Select

Stonewood Products

#1 in Reclaimed Material

Don't forget to check out our other reclaimed options from...
live edge slabs, beams, mantels, wall boarding, granite steps and more.



We Deliver Nationwide



www.StonewoodProducts.com