

For over 40 years, Unilock® has been assisting contractors and homeowners with new products, ideas, and installation information. We're glad that you have chosen to install Unilock products. You'll have peace of mind that you've chosen the best. We recommend that you choose Unilock pavers made with EnduraColor™ or EnduraColor™ Plus for everlasting color, a hard-wearing surface, and exclusive surface textures. See [www.unilock.com](http://www.unilock.com) for details.

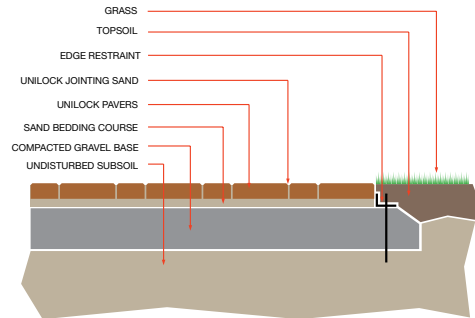


This brochure is a basic guide to show you the necessary steps involved in installing Unilock pavers and walls. Whether you are installing a simple walkway, planter, or a large project such as a driveway, we want you to know that Unilock Authorized Dealers are there to help you along the way.

To download a copy of our in-depth Unilock Advanced Tech Guide and/or to view our installation videos, visit [www.unilock.com](http://www.unilock.com)

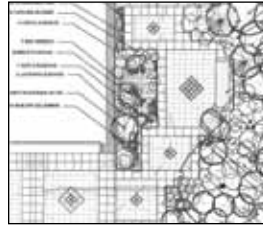


## PAVER Installation



PAVER BASE THICKNESS		
Application	Gravel Base	Sand
Patios	6" - 8" (15 - 20 cm) minimum	3/4" - 1" (2 - 2.5 cm)
Walkways	6" - 8" (15 - 20 cm) minimum	3/4" - 1" (2 - 2.5 cm)
Pool Decks	6" - 12" (15 - 30 cm) minimum	3/4" - 1" (2 - 2.5 cm)
Driveways	10" - 14" (25 - 35 cm) minimum	3/4" - 1" (2 - 2.5 cm)

Base Gravel - Use 3/4" (2 cm) crusher run gravel/sand mix  
Bedding Sand - Use a coarse concrete sand



## 1 Planning

Draw a simple plan showing measurements and grade elevations. Locate one of over 500 Unilock® Dealers at [www.unilock.com](http://www.unilock.com) and bring your plan to the dealer. He or she will help you calculate the correct amount of materials and estimate the cost of your project. The dealer will also have displays and product and color samples for you to choose from, as well as basic helpful advice.



## 2 Preparation

Mark out the location of the patio, walkway, or driveway. Call the utilities, phone company, and cable TV provider to locate any buried cables and/or services.

**Tools required:** Wheel barrow, rake, level, string, tape measure, shovel, compactor, guillotine and/or masonry saw, gloves, and safety glasses. (For small jobs, you may wish to rent a hand tamper instead of a gas-powered one.)



## 3 Excavation

Excavate to a minimum of 6" - 12" (15 - 30 cm) deep, depending on your application type (see Base Thickness Chart). Excavate deeper if the soil had previously been disturbed. Remove all loose soil. Always excavate a minimum of 3" (7 cm) wider on each side than the area you are actually paving. For a driveway, excavate 6" (15 cm) wider on each side than the area you are actually paving.



## 4 Base

Begin placing gravel and compact with a gas-powered plate compactor in layers 2" - 3" (5 - 7.5 cm) thick. Grade the base as close to the final contour of the finished job as possible. Continue until desired height is achieved (see Base Thickness Chart) and base is solid. Slope all installations away from the house/building for drainage purposes. (1" (2.5 cm) slope over every 10' (3 m) is the minimum slope.) The gravel base should end approx. 3" (7 cm) below your desired finished height.



## 5 Screeding

Pavers are laid on a bed of coarse sand placed directly on the compacted base. (see charts and cross-sections) Use 3/4" - 1" (2 - 2.5 cm) diameter pipes as screeding guides on top of the gravel. Set up the guides so that your pavers will be 3/8" (1 cm) above the finished level (this allows for your final compaction). Level the sand evenly by pulling a board along the pipes (see photo). After screeding, remove the guides and fill in the remaining grooves with sand. (To learn more, view our videos online.)



## 6 Banding

Banding and accents are easy to install and make your installation unique. If you are installing circles, fans, borders, or accents, place these first before installing the main pattern. Bring the main field to your accent field and cut the pavers to fit the design.



## 7 Laying the Pavers

Lay the pavers in the desired pattern directly on the screeded bed of sand. Always start along the longest straight side, this will minimize the cutting required. To keep the joint lines straight, use a string line guide. Do not lay the pavers too closely together. If they are laid too tightly, then any attempt to straighten the lines will be difficult and you will not have the proper amount of sand between the joints.



## 8 Cutting

Pavers that do not fit along edges or around objects may require cutting. Mark pavers and cut them with the guillotine cutter or masonry saw. A guillotine cutter is the easiest method, but to achieve a more exact cut, a "dry-cut" masonry saw or a tub-style "wet saw" works best. (Rented from your local rental outlet.)

**ALWAYS WEAR APPROPRIATE SAFETY GEAR WHEN CUTTING.**



## 9 Edging

Edge restraints are a critical element in terms of the durability of a paver installation. They prevent the pavers from moving and shifting laterally. Both plastic and metal edge restraints are effective. Various concrete edging materials also work well with the added benefit of complementing the pavers with color and texture. Edge restraints must always be spiked into the compacted base. Do not place on soil.



## 10 Compacting

After all the cuts have been made, and the edge restraints are in place, the pavers must be swept clean and then compacted with a plate compactor. This helps settle the pavers into the bedding sand and creates a flat surface. (For patterns such as circles and accents, you may want to put some jointing sand in first to stabilize the smaller pieces.) When compacting Unilock Select™ products ensure that a compactor protector plate is being used. In all cases, we recommend a minimum of three passes with the compactor going in alternating directions each time.



## 11 Finishing

Sweep specially graded Unilock® Jointing Sand (available from your Unilock Dealer) into the joints between the pavers. This locks the pavers together creating a very durable surface. For optimum protection from the penetration of weeds and insects, use Unilock® Polymeric Sand to create a sealed joint, which will also resist erosion in sloped applications. Contact Unilock, or ask your local dealer, for more information regarding the use of polymeric sand on Unilock Select™ products.