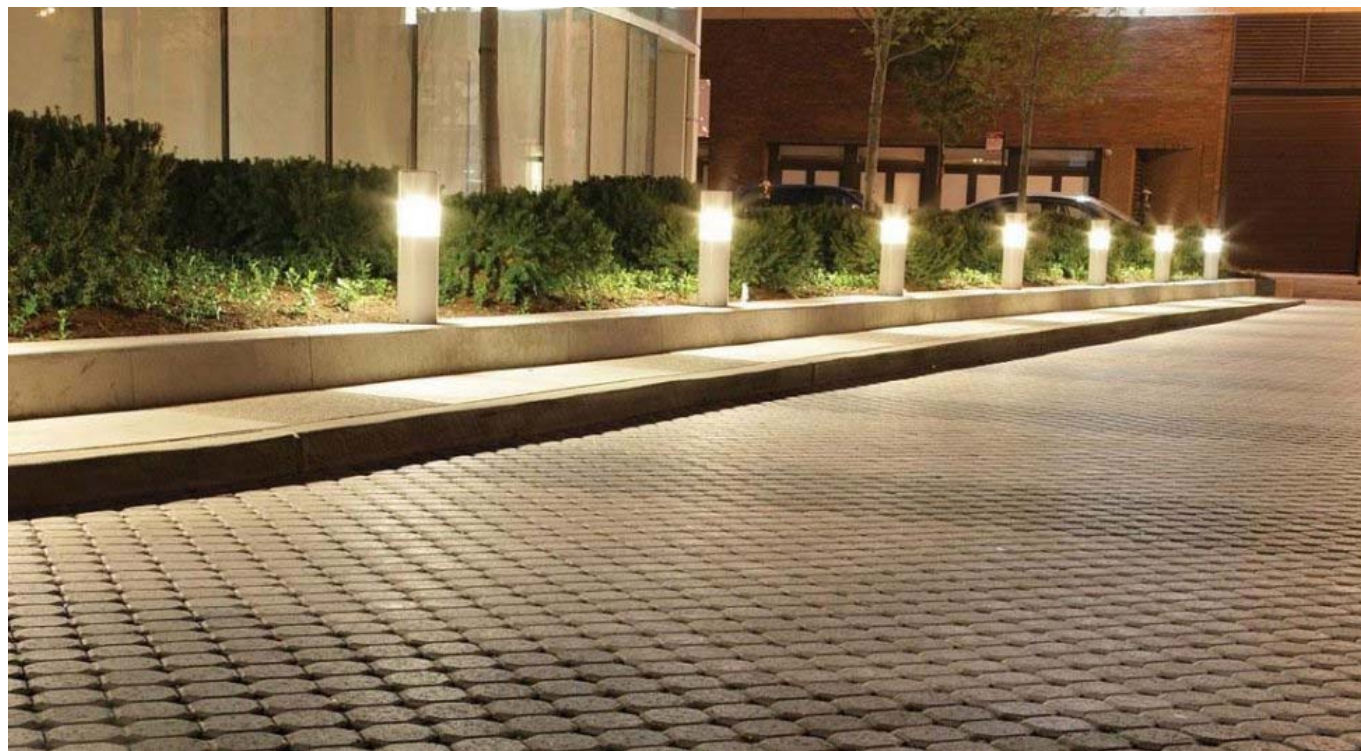


Uni Eco-Stone®

Uni Eco-Stone visually appealing and highly effective.

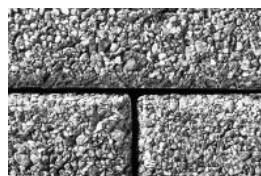
Uni Eco-Stone allows maximum drainage while maintaining a driveable surface. Unlike solid paving surfaces which negatively impact the environment, storm drainage systems, and property through storm water runoff, Uni Eco-Stone allows natural drainage and migration of water into the earth below.



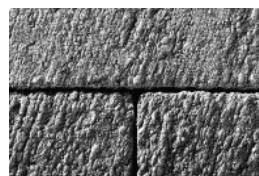
Colors



Standard Finish



Washed Finish



Brushed Finish

Shapes & Sizes



Uni Eco-Stone
(SPECIAL ORDER)
23 cm x 11.5 cm x 8 cm

9" x 4.5" x 3"

Features

Applications

Commercial Vehicular

Pedestrian

Residential Vehicular

SPECIAL ORDER

Patterns

No records found.

Packaging

	Unit Thickness	Sq. Ft. Bndl.	Units Sq. Ft.	Lbs Bndl.	Units Bndl.
Uni Eco-Stone (SPECIAL ORDER)	8	67	3.66	2445	245

Additional Uni Eco-Stone® Information

Special order from standard colors. Sold in full bundles only. 40-50 bundle minimum order required. This product is optimized for mechanical installation.

Important Information

Uni Eco-Stone allows for maximum drainage while maintaining a drivable surface. Controlled gaps between the stones allow natural drainage and migration of rain water into the earth below. Base

preparation must conform to environmental standards.

Base Requirement & Bedding Course – open

- graded paver base specification. **Handling and Installation**– A protective pad is recommended when doing the final paver compaction. Care must be taken to avoid tossing stones so that they bang against each other. Damage to the surface appearance can happen if handled too rough. Installed mechanically or by hand.

Jointing Material and Joint Stabilization - permeable

- Use only select graded stone chips for void filling
- Unilock EasyPro

Sealers

- Product may be sealed but it is not absolutely required
- Unilock Unicare, Surebond, BP Pro and Techniseal sealers can be used.
- Select type for desired aesthetics.
- Product must be cleaned before sealing.

Cleaners – Any paver cleaner may be used for color restoration or general cleaning. Follow manufacturer's dilution rates and application procedures.

i All measurements are nominal

Colors, product data, and availability are subject to change without notice. Please confirm all details with your local Unilock Dealer or call 1-800-UNILOCK (1-800-864-5625) for availability in your area. The colors shown should only be used as a guide. Final color selections should always be made from actual samples.